

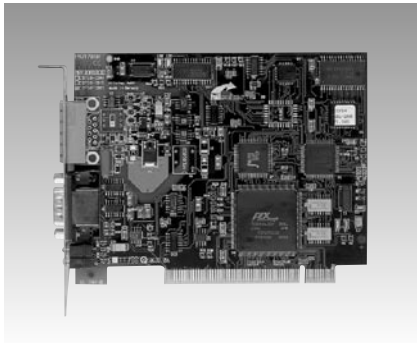
AD-CIF50-DNM AD-CIF104-DNM AD-CIF104-DNS AD-CIF104P-DNM

DeviceNet™ Master PCI Communication Card

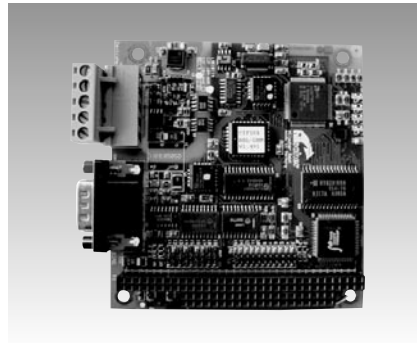
DeviceNet™ Master PC/104 Module

DeviceNet™ Slave PC/104 Module

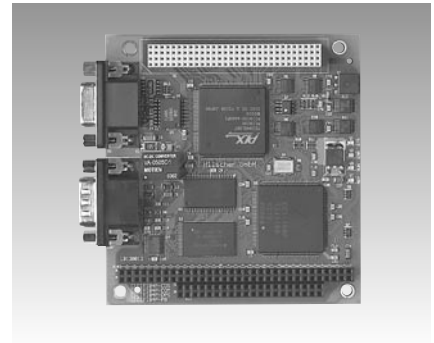
DeviceNet™ Master PC/104-plus Module



AD-CIF50-DNM



AD-CIF104-DNM, AD-CIF104-DNS



AD-CIF104P-DNM



Specifications

Bus Interface

- **Interface** PCI
- **Dual-port Memory** 8 KB
- **Interrupt** 3-7,9-12,14,15 via Plug & Play

DeviceNet Interface

- **Transmission Rates** 125 kBaud, 250 kBaud, 500 kBaud
- **Controller** SJA 1000
- **Interface** ISO 11898, optically isolated
- **Connector** COMBICON 5-pin

Diagnostic Interface

- **Interface** RS-232C, non-isolated
- **Connector** DSub-male connector 9-pin

General

- **Display** RDY, RUN, NET, MOD
- **Operating Voltage** +5 V ±5% / 650 mA, ±12 V ±5% / 50 mA, +11~25 V / 55 mA
- **Operating Temperature** 0 ~ 55° C (32 ~ 131° F)
- **Dimensions (L x W x H)** 134 x 107 x 20 mm (5.3" x 4.2" x 0.8")
- **Weight** 130 g
- **Software**
C functions library: DRV-TKIT
COM interface: DRV-COM
Device driver Windows: DRV-WIN
Device driver Linux: DRV-LNX
Documentation on CD: CD-SYS
Basic version System Configurator

Ordering Information

- **AD-CIF50-DNM** Communication Interface PCI DeviceNet-Master Card

Specifications

- **Card Format** PC/104

Bus Interface

- **Interface** ISA
- **Dual-port memory** 8 KB
- **Interrupt** 3-7,9-12,14,15

DeviceNet Interface

- **Transmission Rates** 125 kBaud, 250 kBaud, 500 kBaud
- **Controller** SJA1000
- **Interface** ISO 11898, optically isolated
- **Connector** COMBICON 5-pin

Diagnostic Interface

- **Interface** RS-232C, non-isolated
- **Connector** RS-232C, non-isolated COMBICON 5-pin

General

- **Display** RDY, RUN, NET, MOD
- **Operating Voltage** +5 V ±5% / 650 mA, +11~25 V / 55 mA
- **Operating Temperature** 0 ~ 55° C (32 ~ 131° F)
- **Dimensions (L x W x H)** 90 x 96 x 25 mm (3.5" x 3.7" x 1")
- **Weight** 120 g
- **Software**
C functions library: DRV-TKIT
COM interface: DRV-COM
Device driver Windows: DRV-WIN
Device driver Linux: DRV-LNX
Documentation on CD: CD-SYS
Basic version System Configurator

Ordering Information

- **AD-CIF104-DNM** DeviceNet-Master PC/104 Module with left COMBICON 5-pin connector
- **AD-CIF104-DNS** DeviceNet-Slave PC/104 Module with left COMBICON 5-pin connector

Specifications

- **Card Format** PC/104-Plus

Bus Interface

- **Interface** PCI
- **Dual-port memory** 8 KB
- **Interrupt** Plug & Play

DeviceNet Interface

- **Transmission Rates** 125 kBaud, 250 kBaud, 500 kBaud
- **Controller** EC1
- **Interface** ISO 11898, optically isolated
- **Connector** COMBICON 5-pin

Diagnostic Interface

- **Interface** RS-232C, non-isolated
- **Connector** RS-232C, non-isolated COMBICON 5-pin

General

- **Display** RDY, RUN, NET, MOD
- **Operating Voltage** +5 V ±5% / 650 mA, 3.3 V ±5% / 400 mA, +11~25 V / 55 mA
- **Operating Temperature** 0 ~ 55° C (32 ~ 131° F)
- **Dimensions (L x W x H)** 90 x 96 x 25 mm (3.5" x 3.7" x 1")
- **Weight** 120 g
- **Software**
C functions library: DRV-TKIT
COM interface: DRV-COM
Device driver Windows: DRV-WIN
Device driver Linux: DRV-LNX
Documentation on CD: CD-SYS
Basic version System Configurator

Ordering Information

- **AD-CIF104P-DNM** DeviceNet-Master PC/104-Plus Module with left COMBICON 5-pin connector