

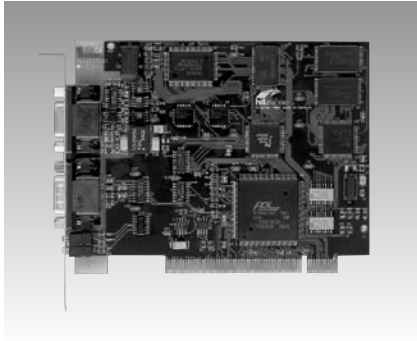
AD-CIF50-PB AD-CIF104-PB AD-CIF104-DPS AD-CIF104P-PB

PROFIBUS™ DP/FMS Master PCI Communication Card

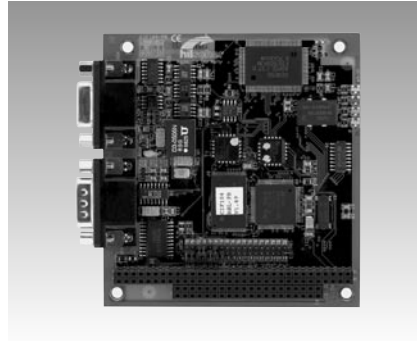
PROFIBUS™ DP/FMS Master PC/104 Module

PROFIBUS™ DP Slave PC/104 Module

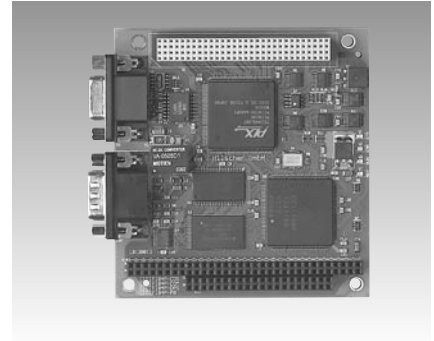
PROFIBUS™ DP/FMS Master PC/104-plus Module



AD-CIF50-PB



AD-CIF104-PB, AD-CIF104-DPS



AD-CIF104P-PB



Specifications

Bus Interface

- **Interface** PCI
- **Dual-port Memory** 8 KB
- **Interrupt** 3-7, 9-12,14, 15 via Plug & Play

PROFIBUS Interface

- **Interface** EN 50170
- **Transmission Rate** 9.6 kBaud to 12 MBaud
- **Connector** ASPC2
- **Interface** RS485, optically isolated
- **Connector** DSub-female connector 9-pin

Diagnostic Interface

- **Interface** RS232C, non-isolated
- **Connector** DSub-male connector 9-pin

General

- **Display** RDY, RUN, STA, ERR
- **Operating Voltage** 5 V ±5%/650 mA
- **Operating Temperature** 0 ~ 55° C (32 ~ 131° F)
- **Dimensions (L x W x H)** 134 x 107 x 20 mm (5.3" x 4.2" x 0.8")
- **Weight** 130 g

▪ **Software**
C functions library: DRV-TKIT
COM interface: DRV-COM
Device driver Windows: DRV-WIN
Device driver Linux: DRV-LNX
Documentation on CD: CD-SYS
Basic version System Configurator

Ordering Information

- **AD-CIF50-PB** Communication Interface PCI PROFIBUS-DP/FMS-Master Card

Specifications

- **Card Format** PC/104

Bus Interface

- **Interface** ISA
- **Dual-port Memory** 8 KB
- **Interrupt** 3-7,9-12,14,15

PROFIBUS interface

- **Interface** EN 50170
- **Transmission Rate** 9.6 kBaud to 12 MBaud
- **Controller** ASPC2
- **Interface** RS485, optically isolated
- **Connector** DSub-female 9-pin

Diagnostic Interface

- **Interface** RS232C, non-isolated
- **Connector** DSub-male 9-pin

General

- **Display** RDY, RUN, STA, ERR
- **Operating Voltage** +5 V ±5%/650 mA
- **Operating Temperature** 0 ~ 55° C (32 ~ 131° F)
- **Dimensions (L x W x H)** 90 x 96 x 25 mm (3.5" x 3.7" x 1")
- **Weight** 120 g

▪ **Software**
C functions library: DRV-TKIT
COM interface: DRV-COM
Device driver Windows: DRV-WIN
Device driver Linux: DRV-LNX
Documentation on CD: CD-SYS
Basic version System Configurator

Ordering Information

- **AD-CIF104-PB** PROFIBUS-DP/FMS-Master PC/104 Module with left DSub 9-pin connector
- **AD-CIF104-DPS** PROFIBUS-DP-Slave PC/104 Module with left DSub 9-pin connector

Specifications

- **Card Format** PC/104-Plus

Bus Interface

- **Interface** PCI
- **Dual-port Memory** 8 KB
- **Interrupt** Plug & Play

PROFIBUS interface

- **Interface** EN 50170
- **Transmission Rate** 9.6 kBaud to 12 MBaud
- **Controller** EC1
- **Interface** RS485, optically isolated
- **Connector** DSub-female 9-pin

Diagnostic Interface

- **Interface** RS232C, non-isolated
- **Connector** DSub-male 9-pin

General

- **Display** RDY, RUN, STA, ERR
- **Operating Voltage** +5 V ±5%/50 mA, +3.3 V ±5% < 400 mA
- **Operating Temperature** 0 ~ 55° C (32 ~ 131° F)
- **Dimensions (L x W x H)** 90 x 96 x 25 mm (3.5" x 3.7" x 1")
- **Weight** 120 g

▪ **Software**
C functions library: DRV-TKIT
COM interface: DRV-COM
Device driver Windows: DRV-WIN
Device driver Linux: DRV-LNX
Documentation on CD: CD-SYS
Basic version System Configurator

Ordering Information

- **AD-CIF104P-PB** PROFIBUS-DP/FMS-Master PC/104-Plus Module with left DSub 9-pin connector